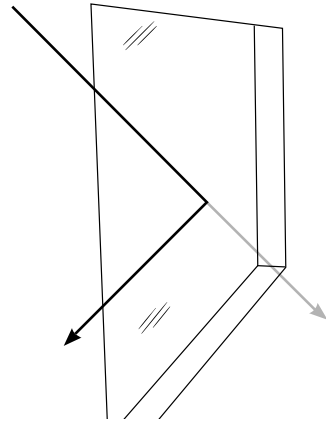


Note:

Modern energy efficient dual-pane windows with coatings will weaken the cellular signals as they pass through because of a metal oxide film applied during manufacturing. If you have dual-pane windows with energy efficient coatings, we recommend one of the other mounting options if your performance is not to your satisfaction.



Product Registration

Thank you for purchasing this weBoost product. Please take time to register your new product at our website:

<https://cellphonesignalbooster.us>

Registering is quick and easy, it only takes 2-3 minutes to complete. Your information is secure, we don't share or sell your information to other third parties.

This device complies with part 15 of the FCC Rules. Operation is subject to the following two conditions: (1) This device may not cause harmful interference, and (2) This device must accept any interference received, including interference that may cause undesired operation.

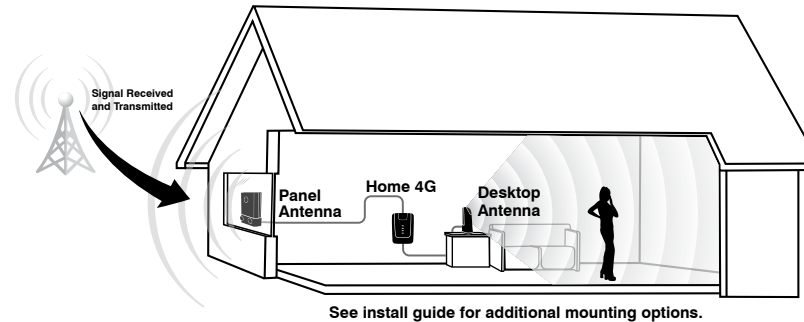
⚠ RF Safety: Any antenna used with this device must be located at least 8 inches from all persons.



How It Works

Your cell phone is an essential part of your life. weBoost is here to ensure you have seamless connections on all your cellular devices.

The Home 4G cellular signal booster is an effective solution to all those times you've had to walk into another room, or even outside, to find a stronger, more reliable cell signal. Installation is simple and can be completed with minimal tools.



NEED ASSISTANCE? WE CAN HELP!

Contact our U.S.-BASED TECH SUPPORT:

- Contact our U.S.-based tech support team at 1-800-501-3153 or email at sales@cellphonesignalbooster.us
- Go online for how to resolve the most common issues at <https://cellphonesignalbooster.us>
- Find a weBoost Certified Installer on our web site at <https://cellphonesignalbooster.us>

Installation is simple, but we're here to make it even easier.



Home 4G Quick Install Guide

For more information refer to full Install Guide at:
<https://cellphonesignalbooster.us>

Package Contents

Home 4G Signal Booster
Desktop Antenna

Cradle Antenna Kit
AC Power Supply

Coax Cable
Cable Connector

Quick Install Diagram

Finding Signal / Install Inside Window Mount Cradle

Insert the Outside Antenna into the Cradle

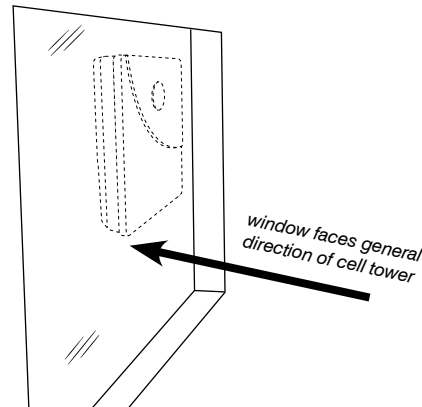
Connect Coax Cable to Outside Antenna

Connect Cables to Home 4G

Connect Power Supply

1 Find the Strongest Signal

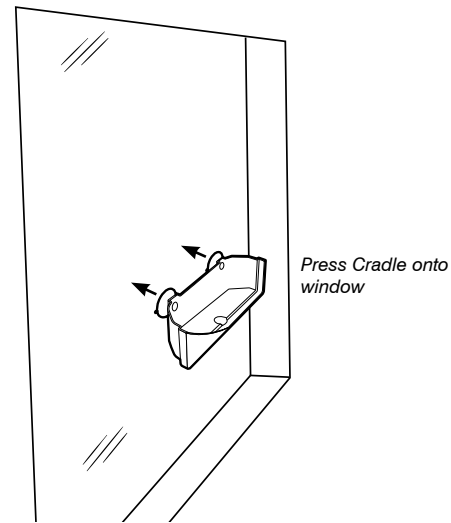
Select a location on the inside of a window as high as possible and at least 20 feet from where the DT4G will be located. Note that this distance typically requires the window mount to be in a different room from where you will locate the DT4G and Desktop Antenna. The window should face roughly in the direction of the strongest cellular signal.



Full diagram on opposite side

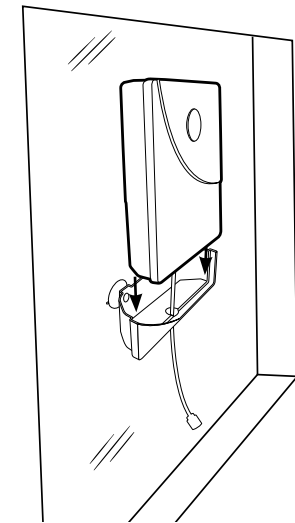
2 Install Inside Window Mount Cradle

Clean the area on the glass with the alcohol prep pad (included). Press the suction cups onto the window in the desired location.



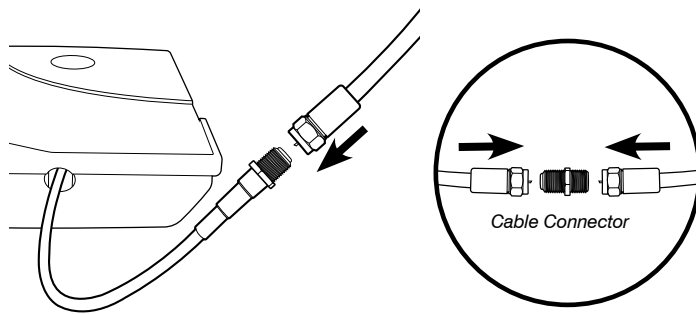
3 Insert the Outside Antenna into the Cradle

Insert the Outside Antenna into the cradle.



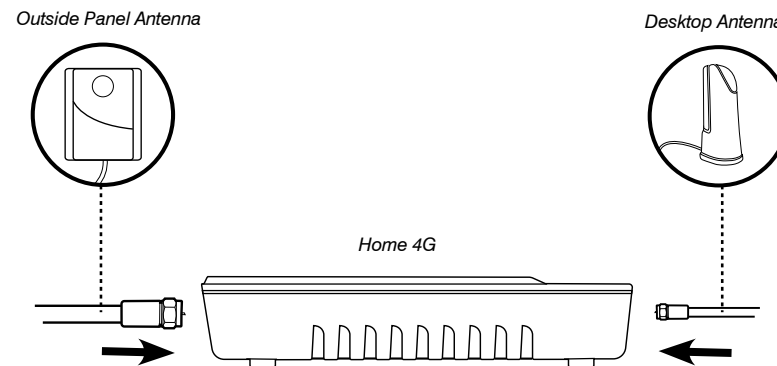
4 Connect Coax Cable to Outside Antenna

Connect the supplied coax cable to the antenna lead cable on the Outside Antenna. Route the cable as desired to the location of the Home 4G. If you need to connect both coax cables, use the Cable Connector provided.



5 Connect Cables to Home 4G

Connect the coax cable to the Home 4G. Connect the Desktop Antenna to the Home 4G.



6 Connect to Power Supply

Connect the AC Power Supply to the Home 4G then to a surge protected AC power strip with at least a 1000 Joule rating. If your Home 4G is working correctly, the lights will be green.

